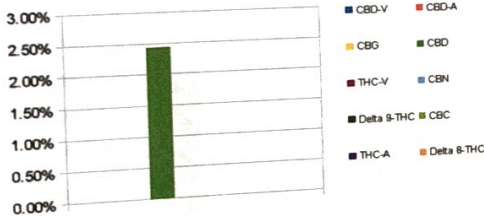


Sample Identification		Sample Information	
Laboratory Number		<b>Large O</b>	
Batch Number		<b>2018009481</b>	
Matrix		<b>Z046</b>	
Analyzed Date		<b>Medible</b>	
Extraction Date		07/17/18	
		07/17/18	
Cannabinoid (HPLC)		%	mg/g
Compound			
CBD-V		ND	ND
CBD-A		ND	ND
CBG		ND	ND
CBD		2.43%	24.30
THC-V		ND	ND
CBN		ND	ND
Delta 9-THC		ND	ND
CBC		ND	ND
THC-A		ND	ND
Delta 8-THC		ND	ND
Cannabinoids Total			
<b>Max Active THC</b>		<b>ND</b>	<b>ND</b>
<b>Max Active CBD</b>		<b>2.43%</b>	<b>24.30</b>
<b>T. Active Cannabinoids</b>		<b>2.43%</b>	<b>24.30</b>
<b>Total Cannabinoids</b>		<b>2.43%</b>	<b>24.30</b>

Max Active Ratios

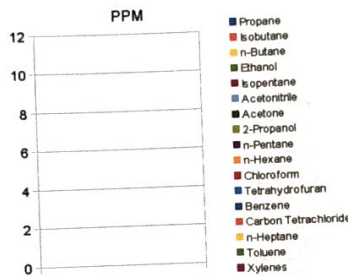
NA :1 CBD to THC  
 ND :1 THC to CBD

Cannabinoid %



RS (GCMS-HS)	PPM	RL
Compound		
Propane	NT	5.0
Isobutane	NT	5.0
n-Butane	NT	5.0
Ethanol	NT	5.0
Isopentane	NT	5.0
Acetonitrile	NT	5.0
Acetone	NT	50.0
2-Propanol	NT	5.0
n-Pentane	NT	5.0
n-Hexane	NT	5.0
Chloroform	NT	5.0
Tetrahydrofuran	NT	5.0
Benzene	NT	5.0
Carbon Tetrachloride	NT	5.0
n-Heptane	NT	5.0
Toluene	NT	5.0
Xylenes	NT	10.0

Residuals



g/medible

3.12

mg THC/medible

ND

mg CBD/medible

75.8

(mg) total cannabinoids/medible

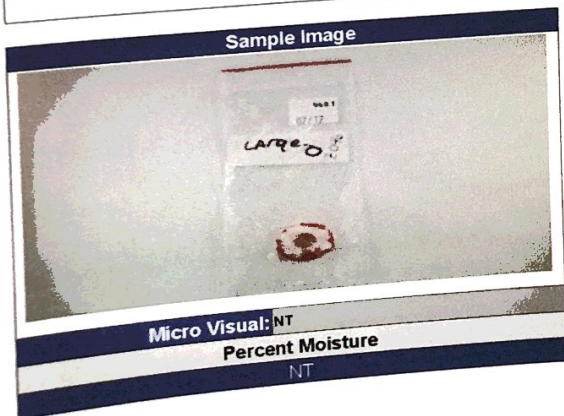
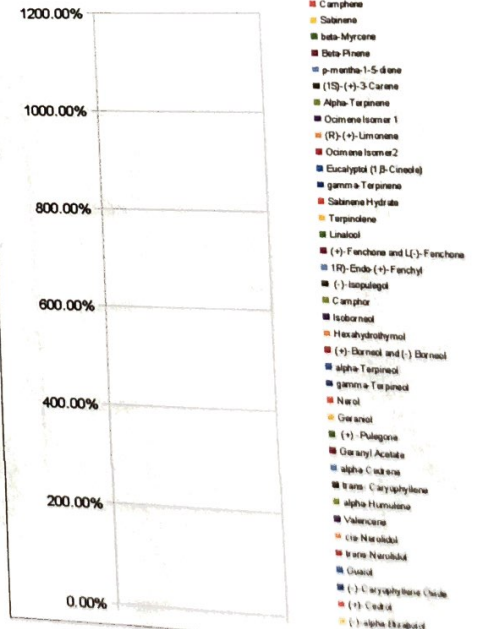
75.8

Metals	PPM	RL
Compound		
Lead	NT	0.010
Arsenic	NT	0.010
Cadmium	NT	0.010
Mercury	NT	0.001

RL=Reporting Limit  
 NA=Not Applicable  
 NT=Not Tested  
 ND=Non Detected

Terpene (GC-MS)	%	mg/g
Compound		
alpha-Pinene	NT	NT
Camphene	NT	NT
Sabinene	NT	NT
beta-Myrcene	NT	NT
Beta-Pinene	NT	NT
p-mentha-1,5-diene	NT	NT
(1S)-(+)-3-Carene	NT	NT
Alpha-Terpinene	NT	NT
Ocimene Isomer 1	NT	NT
(R)-(+)-Limonene	NT	NT
Ocimene Isomer 2	NT	NT
Eucalyptol (1,8-Cineole)	NT	NT
gamma-Terpinene	NT	NT
Sabinene Hydrate	NT	NT
Terpinolene	NT	NT
Linalool	NT	NT
(+)-Fenchone and L(-)-Fenchone	NT	NT
1R)-Endo-(+)-Fenchyl	NT	NT
(-)-Isopulegol	NT	NT
Camphor	NT	NT
Isoborneol	NT	NT
Hexahydrothymol	NT	NT
(+)-Borneol and (-) Borneol	NT	NT
alpha-Terpineol	NT	NT
gamma-Terpineol	NT	NT
Nerol	NT	NT
Geraniol	NT	NT
(+)-Pulegone	NT	NT
Geranyl Acetate	NT	NT
alpha-Cedrene	NT	NT
trans-Caryophyllene	NT	NT
alpha-Humulene	NT	NT
Valencene	NT	NT
cis-Nerolidol	NT	NT
trans-Nerolidol	NT	NT
Guaiol	NT	NT
(-)-Caryophyllene Oxide	NT	NT
(+)-Cedrol	NT	NT
(-)-alpha-Bisabolol	NT	NT
Total Terpenes	NT	NT

Terpenes %



Chemist: JG  
 Report Expires: 08/17/18

