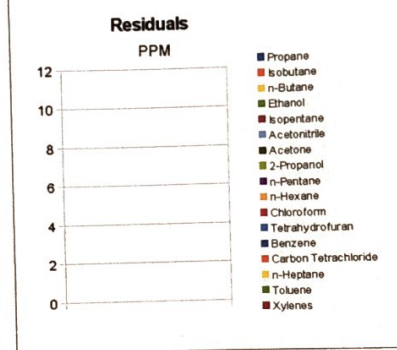


| Sample Identification         |  | Sample Information  |               |
|-------------------------------|--|---------------------|---------------|
| Laboratory Number             |  | <b>Canna Crunch</b> |               |
| Batch Number                  |  | <b>2018009474</b>   |               |
| Matrix                        |  | <b>Z8004</b>        |               |
| Analyzed Date                 |  | <b>Concentrate</b>  |               |
| Extraction Date               |  | 07/17/18            |               |
| <b>Cannabinoid (HPLC)</b>     |  | %                   | mg/g          |
| <b>Compound</b>               |  |                     |               |
| CBD-V                         |  | ND                  | ND            |
| CBD-A                         |  | ND                  | ND            |
| CBG                           |  | ND                  | ND            |
| CBD                           |  | 15.46%              | 154.64        |
| THC-V                         |  | ND                  | ND            |
| CBN                           |  | ND                  | ND            |
| Delta 9-THC                   |  | ND                  | ND            |
| CBC                           |  | ND                  | ND            |
| THC-A                         |  | ND                  | ND            |
| Delta 8-THC                   |  | ND                  | ND            |
| <b>Cannabinoids Total</b>     |  |                     |               |
| <b>Max Active THC</b>         |  | <b>ND</b>           | <b>ND</b>     |
| <b>Max Active CBD</b>         |  | <b>15.46%</b>       | <b>154.64</b> |
| <b>T. Active Cannabinoids</b> |  | <b>15.46%</b>       | <b>154.64</b> |
| <b>Total Cannabinoids</b>     |  | <b>15.46%</b>       | <b>154.64</b> |

| RS (GCMS-MS)         | PPM | RL   |
|----------------------|-----|------|
| <b>Compound</b>      |     |      |
| Propane              | NT  | 5.0  |
| Isobutane            | NT  | 5.0  |
| n-Butane             | NT  | 5.0  |
| Ethanol              | NT  | 5.0  |
| Isopentane           | NT  | 5.0  |
| Acetonitrile         | NT  | 50.0 |
| Acetone              | NT  | 5.0  |
| 2-Propanol           | NT  | 5.0  |
| n-Pentane            | NT  | 5.0  |
| n-Hexane             | NT  | 5.0  |
| Chloroform           | NT  | 5.0  |
| Tetrahydrofuran      | NT  | 5.0  |
| Benzene              | NT  | 5.0  |
| Carbon Tetrachloride | NT  | 5.0  |
| n-Heptane            | NT  | 5.0  |
| Toluene              | NT  | 5.0  |
| Xylenes              | NT  | 10.0 |

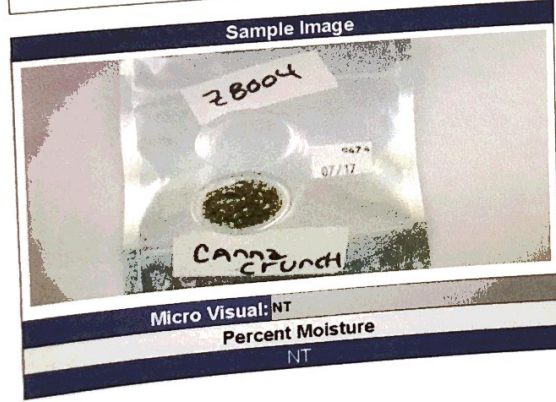


|  |    |
|--|----|
| <b>g/medible</b>                       | NA |
| <b>mg THC/medible</b>                  | NA |
| <b>mg CBD/medible</b>                  | NA |
| <b>(mg) total cannabinoids/medible</b> | NA |

| Metals          | PPM | RL    |
|-----------------|-----|-------|
| <b>Compound</b> |     |       |
| Lead            | NT  | 0.010 |
| Arsenic         | NT  | 0.010 |
| Cadmium         | NT  | 0.010 |
| Mercury         | NT  | 0.001 |

RL=Reporting Limit  
 NA=Not Applicable  
 NT=Not Tested  
 ND=Non Detected

| Terpene (GC-MS)                | %         | mg/g      |
|--------------------------------|-----------|-----------|
| <b>Compound</b>                |           |           |
| alpha-Pinene                   | NT        | NT        |
| Camphene                       | NT        | NT        |
| Sabinene                       | NT        | NT        |
| beta-Myrcene                   | NT        | NT        |
| Beta-Pinene                    | NT        | NT        |
| p-mentha-1,5-diene             | NT        | NT        |
| (1S)-(+)-3-Carene              | NT        | NT        |
| Alpha-Terpinene                | NT        | NT        |
| Ocimene Isomer 1               | NT        | NT        |
| (R)-(+)-Limonene               | NT        | NT        |
| Ocimene Isomer2                | NT        | NT        |
| Eucalyptol (1,8-Cineole)       | NT        | NT        |
| gamma-Terpinene                | NT        | NT        |
| Sabinene Hydrate               | NT        | NT        |
| Terpinolene                    | NT        | NT        |
| Linalool                       | NT        | NT        |
| (+)-Fenchone and L(-)-Fenchone | NT        | NT        |
| 1R)-Endo-(+)-Fenchyl           | NT        | NT        |
| (-)-Isopulegol                 | NT        | NT        |
| Camphor                        | NT        | NT        |
| Isoborneol                     | NT        | NT        |
| Hexahydrothymol                | NT        | NT        |
| (+)-Borneol and (-) Borneol    | NT        | NT        |
| alpha-Terpineol                | NT        | NT        |
| gamma-Terpineol                | NT        | NT        |
| Nerol                          | NT        | NT        |
| Geraniol                       | NT        | NT        |
| (+)-Pulegone                   | NT        | NT        |
| Geranyl Acetate                | NT        | NT        |
| alpha-Cedrene                  | NT        | NT        |
| trans-Caryophyllene            | NT        | NT        |
| alpha-Humulene                 | NT        | NT        |
| Valencene                      | NT        | NT        |
| cis-Nerolidol                  | NT        | NT        |
| trans-Nerolidol                | NT        | NT        |
| Guaiol                         | NT        | NT        |
| (-)-Caryophyllene Oxide        | NT        | NT        |
| (+)-Cedrol                     | NT        | NT        |
| (-)-alpha-Bisabolol            | NT        | NT        |
| <b>Total Terpenes</b>          | <b>NT</b> | <b>NT</b> |



Chemist: JG  
 Report Expires: 08/17/18

